

ADS

Pasadena STATE BANK

"YOUR FRIENDLY HOME TOWN BANK"

PASADENA, TEXAS



OFFICERS

JAS. G. DONOVAN	Chairman
M. F. REED	President
S. R. JONES, JR.	Executive Vice President
A. F. MENKE	Vice President
W. E. MARSH	Vice President
G. M. MAGEE	Vice President
H. P. JAMES	Vice President
J. W. ANDERSON	Vice President
B. S. BEAMAN, JR.	Vice President and Cashier
MRS. KATHERINE SELF	Asst. Cashier
B. F. HOLCOMB	Asst. Cashier
B. F. WHITWORTH, JR.	Asst. Cashier

DIRECTORS

Clyde Abshier
J. W. Anderson
Delbert L. Atkinson
B. S. Beaman, Jr.
W. J. Butler
Dr. Edwin E. Connor
Alden Bailey
Jas. G. Donovan
Jeff E. Fleming
Hickman Garrett, Sr.
Vincent C. Henrich
Weldon J. Hornsey
S. R. Jones, Jr.
Leo Karkowsky
A. M. Koury
W. C. McMasters
A. F. Menke
J. D. Parks, Jr.
Theodore D. Pasternak
Marcella D. Perry
J. E. Pomeroy
M. F. Reed

109 E. Shaw

MEMBER F. D. I. C.

GR-2-1241

COMMUNITY BUILDERS



**SUBURBAN
PROPERTIES, INC.**

FINEST HOMES

Congratulations, Graduates!
Best Wishes for a Full and
Fruitful Life

GR-2-5563

1215 South Main

GR-2-5362

Pasadena, Texas

Helyn's

TEENS' AND LADIES' APPAREL

413 York Street HU-6-3282

SOUTH HOUSTON

Congratulations, Seniors!

MEADOR BROS., INC.

Hardware

and

Appliances

HU-6-7766

SOUTH HOUSTON

Compliments of

PASADENA CITY OFFICIALS

CLYDE T. GARY, MAYOR

— City Commissioners —

ALLEN THURMAN

TROY CRAWFORD

VARREECE BERRY

TOMMY JONES

HIGHLAND BEAUTY SALON

Louise Green, Manager

Essie Watson, Operator

1708 SOUTH SHAVER GR-2-3321

Contracting — Sales — Service
SOUTH HOUSTON PLUMBING CO.

Fred Oliphint, Owner

HU-6-7336 202 Spencer



SOLLOCK - TURNER, INC.

Dodge and Rambler Sales

GR-2-3604

1510 SOUTH RICHEY

ACME LAUNDRY AND CLEANERS

Plant and Office

103 SPENCER HU-6-3661

Compliments

GOLDEN ACRES GROCERY & FEED

2305 PRESTON ROAD GR-2-0587

Congratulations, Seniors

WALLIS FOOD CENTER

5334 Spencer HU-6-3629

GOLDEN ACRES



Compliments

SOUTH HOUSTON PHARMACY

Prescription Pharmacy

HU-6-6800 SOUTH HOUSTON

SKYLARK CAMERA CO.

"Your Kodak Dealer
for Pasadena"

GR-2-5525



109 WEST SOUTHMORE PASADENA

ROSS LUCAS MOTORS

New and Used Cars

BUSINESS GR-2-3777

HOME GR-2-5741

GR-2-8757 105 West Curtis

PASADENA TYPEWRITER CO. ROYAL DISTRIBUTORS

Albert Farah, Owner

Sales Service Rentals

Office
HU-6-0156

Home
HU-6-8678

L. E. CARNES REAL ESTATE

418 Spencer South Houston

FOODWAY

1701 South Richey
PASADENA, TEXAS

GR-2-3231 Res. GR-3-2108
FLOWERS BY CINDERELLA

Flowers for All Occasions

134 E. Southmore

Mrs. Lillian Grubbs, Owner

IF IT'S GOOD FOOD
YOU WANT . . .

Visit



CATO'S RESTAURANT

1429 South Richey
at Southmore

OPEN 24 HOURS
HU-6-9924

BOB HOLCOMB'S BAR-B-Q

We Cater to Parties

AIR CONDITIONED 1114 SPENCER HWY.
DINING ROOM SOUTH HOUSTON

Compliments of
A FRIEND

WALT'S DRIVE-IN GROCERY

1006 1/2 Houston Blvd.
HU-6-9908 South Houston
OPEN FROM 7 TO 11—7 DAYS A WEEK

LET US HELP

3% on Savings



HU-6-5000

Your Money

SOUTHERN STATE BANK

111 SPENCER HIGHWAY

SOUTH HOUSTON

Open Every Saturday
Drive-in Windows

Ample Parking
Night Depository



DELAHOUSAYE AUTO PAINT & BODY CENTER

24 Hour Wrecker Service

GR-2-3656 GR-2-3657 GR-2-1058

412 SO. SHAVER STREET

Pasadena

Texas

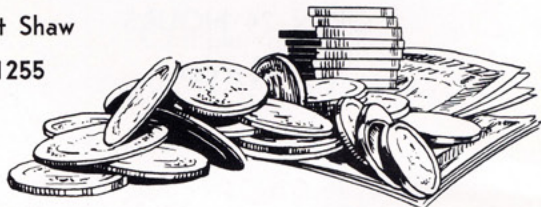
M. L. (DEL) DELAHOUSAYE JR.

We Specialize in
Individual Hair Styling
**THELMA ZEARLINES
BEAUTY SHOP**

1910 1/2 OLD GALVESTON RD.
HU-6-0466
SOUTH HOUSTON

Compliments
**FIRST NATIONAL BANK
OF PASADENA**
MEMBER F. D. I. C.
AND FEDERAL RESERVE

222 West Shaw
GR-2-1255



**ADAMS
FLOWER AND GIFT SHOP**

CITY WIDE DELIVERY

Flowers Designed for
Every Occasion

MRS. FRANK ADAMS

HU-6-0561 1210 Houston Blvd.
OL-4-0218 South Houston

**DOLLAR
RADIO - TV SERVICE**

212 Spencer Hwy.
SOUTH HOUSTON
HU-6-7417

SMITH'S APPLIANCES, INC.

YOUR



DEALER

112 East Southmore
GR-2-3634

... IT'S FUN ... IT'S EASY
To Play the Piano or Organ

Lessons ... Lesson
Only ... Music and Materials
a Week ... Piano or Organ to
INCLUDES Practice on.

**BROOK MAYS
PIANO & ORGAN STUDIOS**
2070 South Richey GR-2-6301

Compliments
of

R. F. BEELER,

Builder

Compliments
FREEWAY MANOR PHARMACY
411 EDGEBROOK

W. M. FURNACE
Real Estate Accounting
Gene Kitch — Associate

HU-6-7794
815 College South Houston



Compliments
of

GULF PALMS

DEVELOPMENT CO., INC.

New and Used Cars
HALL & HARGIS MOTOR COMPANY

203 S. Shaver
Pasadena

R. W. Hall
MI-5-7656

Office
GR-2-8631

A. V. Hargis
GR-2-4829

Greetings, Trojans
From
RUBEN BROWN'S
DAD AND MOM

Compliments
BARGAIN LUMBER CO.

5517 SPENCER HU-6-5583

"Get Our Prices Before
You Buy"

Compliments
of
**GULF STATES
ASPHALT CO., INC.**
300 CHRISTY SOUTH HOUSTON
HU-6-7195

DUMAS FEED & FARM SUPPLY
1308 Galveston Rd.
HU-6-1821 SOUTH HOUSTON

CRAWFORD'S FOOD MKT.
"Quality Merchandise
at Lowest Prices"
HU-6-9963 GOLDEN ACRES

Go — Trojans — Go
**PASADENA
HARDWARE AND SPORTING
GOODS**

129 SO. SHAVER (DOWNTOWN)
RED BLUFF AND SOUTH AVE.
(MARKET CENTER)

BEN FRANKLIN STORE
2068 SOUTH RICHEY
Serving South Houston

New and Used Cars
AUTO LANE
"Congratulations"
802 Southmore GR-3-7818

Chatham - Stricklin

DON CHATHAM JR.
FRANCES STRICKLIN

PHOTOGRAPHY

1325 S. Richey
Pasadena, Texas
Phone GR 2-6373

YOUR SCHOOL PHOTOGRAPHER



**SOUTH HOUSTON HARDWARE
AND SPORTING GOODS**

1910 Old Galveston Road

OPEN SUNDAY

SOUTH HOUSTON, TEXAS

HU-6-8524



Compliments of
SOUTH HOUSTON LUMBER CO.

Steel — Lumber — Roofing
Sheetrock — Doors — Moulding
Hardware — Jones-Blair Paint

WE SERVE TO SERVE AGAIN

HU-4-2111
413 Pennsylvania

HU-4-2151
South Houston

D. A. KIMMEY, Owner

Compliments of
JACK V. ASHLEY

General Insurance

YOUR INDEPENDENT INSURANCE AGENT

"Serves You First"

Office
CA-2-2224

Home
GR-3-6127

proud . . .

to be known as a
Palladium booster
in this, your first
fine annual!

and proud to be known
as your good neighbor
in Pasadena!



MISS SUE WOLF . . .

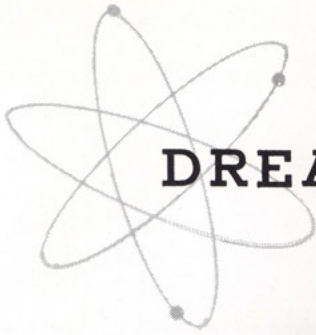
Your Choice As
Most Beautiful Girl



FURNITURE COMPANY, inc.

CORNER SHAYER AT SHAW

PASADENA, TEXAS



$$y = \frac{2x}{(2-k)} \left[\left(\frac{a}{x} \right)^{1-\frac{1}{2}} - 1 \right]$$

DREAMERS... DOERS



America realizes her dreams in accomplishments. What better way to assure *your* place in the future than by preparing yourself for a professional role in the Scientific Era. Your dreams . . . and plans . . . right now will largely determine your deeds of tomorrow. The chemical industry offers unlimited opportunity for growth and development to young science graduates in the Gulf Coast area. Discuss it with your curriculum advisor at the first opportunity.

PETRO-TEX CHEMICAL CORPORATION
HOUSTON 1, TEXAS

JOINTLY OWNED BY
FOOD MACHINERY AND CHEMICAL CORPORATION AND TENNESSEE GAS TRANSMISSION COMPANY

Petro-Tex

WHICH FUTURE FOR YOU . . .



Will your chosen field be growing 10 years from now? Or will it be standing still? The choice you make has never been so important . . . to you or to our country.

There is one field where you have an unlimited chance for personal growth PLUS unending opportunity to contribute to Man's well-being: CHEMISTRY. People are needed for every phase of the chemical business: research, marketing, administration, sales and manufacturing.

We are on the threshold of wonderful new discoveries vital to us in our food, medicines, clothing, building materials, in the very fuels that will carry us to new worlds.

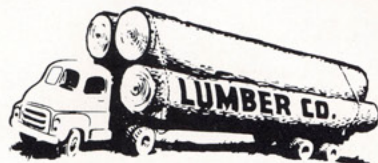
We and you are fortunate in having these new frontiers to conquer.



Chemicals You Live by

P.O. Box 686, Pasadena, Texas

DIAMOND ALKALI COMPANY



— For —
QUALITY LUMBER

Southern Yellow Pine
(S.P.I.B. Grade Marked)
Kiln Dried

— Economy
— Utility

FIR

BUILDERS HARDWARE

Kuhn's PAINT Glidden

Tools Glass

— SEE —

**GOLDEN TRIANGLE
LUMBER COMPANY**

507 College St. HU-6-7106
SOUTH HOUSTON, TEXAS



3019 South Shaver,
Pasadena (Off
Spencer Highway)

HU-6-2120

For the Cleanest Used
Cars in Town and the
Best Deal on a New Car

BOB MORIN MOTORS

Our Customers Are Our
Best Salesmen

For More and More Car
for Your Money

SEE MORIN

FAME CLEANERS

Personalized Service

1710 South Shaver Pasadena

Printing

Office Supply

SOUTH HOUSTON BOOK STORE

511 College HU-6-2058

MOBUD DEPARTMENT STORE

"South Houston's Finest"

**BOWMAN'S FEED AND
HARDWARE**

Lone Star Feeds
Seeds — Fertilizers — Poultry
Live Stock — Dairy

FREE DELIVERY

Price — Quality — Service

WE SPECIALIZE IN VETERINARY SUPPLIES

5725 Spencer — Golden Acres
HU-6-9841

PAGE'S SHOE SHOP

107 1/2 South Munger
GR-3-7591

MONTERREY TILE AND BRICK CO.

Wholesale
Ceramic Tile, Brick, Glass
Mosaics, Japanese Mosaics
HU-6-1621 HU-6-7350

CHAPMAN HARDWARE

Repair and Rent Tools
GR-2-3700 7:30 to 9:30 P.M.

1700 South Shaver, Pasadena
Next to the Keystone Motel

"AVON CALLING"

For Avon Cosmetics Call

SHIRLEY WALTERS

GR-2-7262 302 Rustic, Pasadena

JACK F. GUYNES

Choice Meats
Res. GR 2-0963 Bus. GR 2-8282
1516 South Shaver

"Let Us Fill Your Deep Freeze
the Economical Way"

GR 2-0827 118 East Southmore

ESTLINBAUM AUTO SUPPLY

Wholesale and Retail

R. M. ESTLINBAUM

PASADENA, TEXAS

ANGEL'S GRILL

24 Hour Service

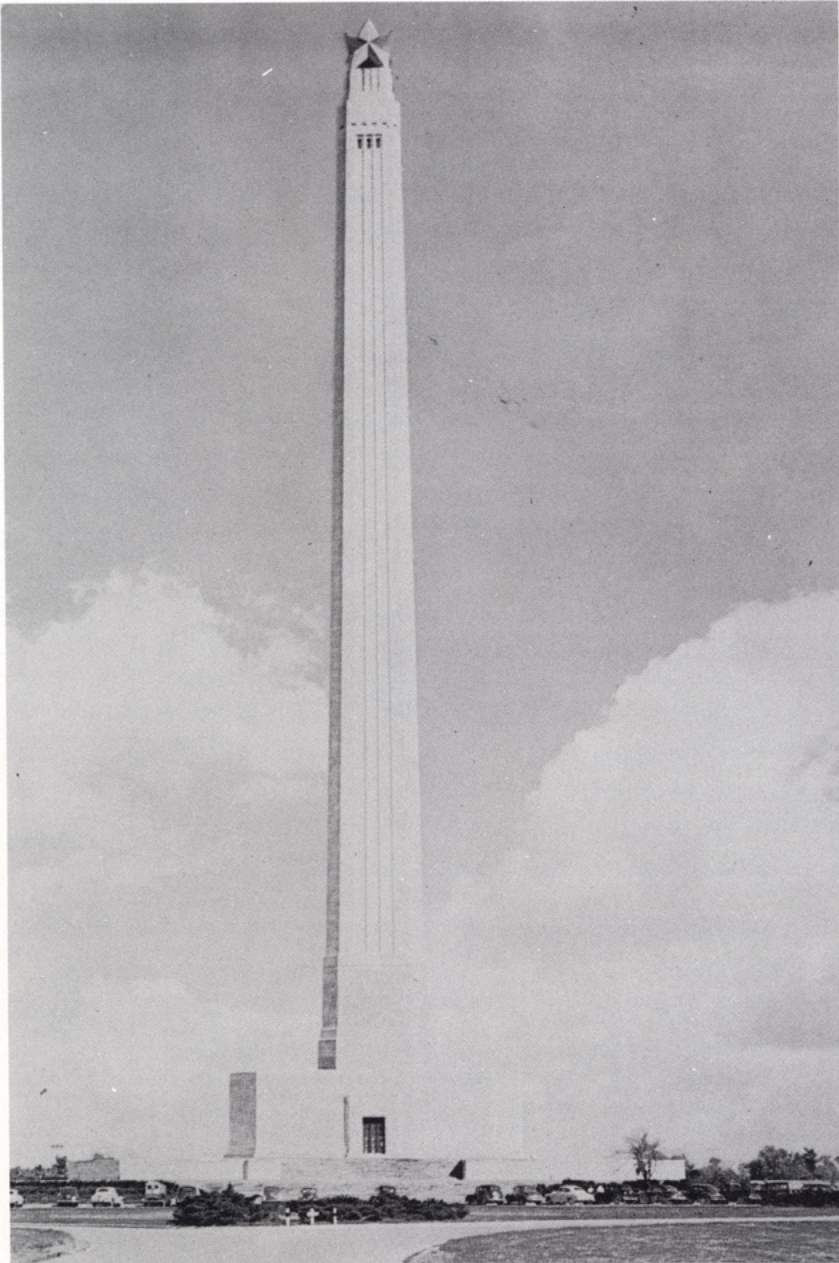
1505 South Main Pasadena
GR 2-0235

PARKER MUSIC CO.

of Pasadena

1007 East Harris GR 3-1681

Congratulations, Seniors!



SAN JACINTO STATE BANK

PASADENA, TEXAS

Southmore and Bird Road

"THE BANK FOR EVERYBODY"

Member of

FEDERAL DEPOSIT INSURANCE CORPORATION

SENIOR INDEX

- ABLES, E. C. (Sonny), 35, 88, 98—Basketball Manager 57; Track Manager 57; Slide Rule Club 57; Science Club 58; Los Amigos 57, 58; Photography Club 59, Vice-President 59; Tennis Team 57; Senior Play 59.
- AKRIDGE, CAROLYN, 35, 19, 109, 116, 89, 95—Transferred from Smiley High 57; FHA 58, 59; Good Citizen Award 59; Choir 58; Science Club 59, Corresponding Secretary 59; Student Council Alternate 59; Dramatics Club 58, 59, Secretary 58, Historian 59; Library Club 58, 59, Vice-President 58, President 59; Most Ambitious 59; Senior Play 59.
- ALLBRITTON, DAVID LEE, 35, 123—Football 58; Football Trainer 59.
- ALVARADO, DOMINGO, 35, 117—FHA 57, 58; Typing Club 57; GRA 57; Commercial Scholarship 59.
- BAETZ, DENNIS, 35.
- BALDWIN, JO ANN, 97—GRA 58, 59.
- BARCELLO, BETHEL, 35, 85, 106, 107, 131—A Cappella Choir 58, 59, Secretary 58, 59; Typing Award 58; Cheerleader 59; Anniversary Queen 59.
- BARNETTE, CORNELIA, 35, 29, 143, 89—Future Nurses Club 59; Dramatics Club 59; Senior Play 59.
- BARNES, BETTY ANN, 36, 88, 117, 109, 29—Finalist in National Merit Scholarship Contest 59; Pasadena Science Fair, Blue Ribbon 58; Slide Rule Club 58, 59; Library Club 58, 59, Treasurer 58, Historian 59; Science Club 59; Tri-Hi-Y 59; Senior Play 59.
- BERRY, WALLACE, 36, 122, 126, 108, 139—Football 59, lettered 59; Track 58, 59, Captain 58, lettered 58, 59; A Cappella Choir 59; FFA 57, 59, Treasurer 59; Hi-Y 58, 59; Most Athletic 59.
- BESSELMAN, DAVID, 36—FFA 58, 59.
- BEVAN, GLENDA RUTH, 26, 93, 118, 97—A Cappella Choir 59; FHA 58, 59, Song Leader 59; Future Teachers 59, Song Leader 59; Slide Rule Club 57, Secretary 57.
- BIGGOTT, JO ANN, 36, 143, 144, 108, 97—GRA 58, 59, Treasurer 59, Vice-President 58; FHA 57, 58, 59; Most Athletic 59.
- BLACK, NELLE, 36, 143—Band 57; Tri-Hi-Y 59, Sergeant-at-Arms 59; FHA 57, 58, 59.
- BOMER, GERARD, 36—FHA 59; Science Club 59.
- BOULTER, MARTHA ANN, 36—Student Council Alternate 58; Tri-Hi-Y 59; FHA 58, 59; Booster Club 59.
- BOYD, CAROLYN SUE, 36, 97—Transferred from San Jacinto High 57; Trojan Scribes 58; Booster Club 59; Junior Achievement 59; Science Fair, Blue Ribbon 58.
- BOYER, BESS ANN, 36, 142, 97—Dramatics Workshop 57; FHA 58, 59; Annual Staff Art Editor 59.
- BRAMLETT, LINDA, 36, 81, 108, 97—Student Council Alternate 57, Representative 59; Tri-Hi-Y 59, Vice-President 59, Delegate to Beaumont 59; FHA 57; GRA 58, 59; Most Versatile 59.
- BRANDIN, CAROLE, 37, 143—Booster Club 59; FHA 58, 59; Dramatics Club 59; Bowling Club 59; Transferred from Milby 57.
- BRINK, DAVID—Transferred from Tuscola, Illinois 58.
- BROOKOVER, RICHARD, 37—Football 58; FFA 59.
- BROWN, RUBEN, 36, 37, 34, 79, 95, 122, 124, 132, 134, 118—Football 58, 59, lettered 59; Basketball 57, 58, 59, lettered 58, 59; Track 58; Student Council 58, 59, Parliamentarian 58; Junior Class Vice-President 58; Senior Class President 59; Debate 57; Slide Rule 58; Hi-Y 58, Chaplain 58; Science Club 59, Parliamentarian 59; Junior Rotarian 58, 59; Senior Ring Committee 58; Perfect Attendance 57, 58; Honor Roll 57, 58; Senior Play 59.
- BRUTON, DONNA, 37, 143—Tri-Hi-Y 59; FHA 57.
- BUCHANAN, PEGGY, 37, 145—FHA 57, 59.
- BURNEY, JOYCE, 37—Future Teachers 57; FHA 57, 58, 59; Tri-Hi-Y 59; Booster Club 57.
- BUTLER, GENE, 37—FFA 57, 58, 59.
- CADE, HAROLD, 37—Football 58; Track 57, 58, 59.
- CALK, JUDY, 37, 96, 97—Future Nurses 57, 58, 59; GRA 57, 58; Booster Club 57; Science Club 57, 59.
- CANNON, MARGARET, 37—Transferred from Clinton, Oklahoma.
- CHAMBERS, DONNA, 37, 30, 87, 89, 3—*Trojan Torch* Editor; FHA 57, 59; Trojan Scribes 58, 59, Vice-President 58, President 59; Junior Class Secretary 58; Tri-Hi-Y 59; Senior Ring Committee 58.
- CHANDLER, BOBBIE JEAN, 38, 34, 80, 143, 19, 97, 109—Student Council 59, Alternate 57, 58, Historian 59; Senior Class Vice-President 59; GRA 57, 58, 59, President 57, Secretary 59; FHA 59; Friendliest 59.
- CHRIST, A. J., 38—FFA 58.
- CHRIST, CONRAD, 38.
- CHURCH, TOM, 38, 95, 115, 27, 113, 98—Slide Rule Club 59; Science Club 59; Lens Lancers 59; Most Handsome 59.
- CLARK, ANITA, 38, 106, 145, 119—Tri-Hi-Y 59; Booster Club 59; FHA 57, 58, 59; FFA Sweetheart 59.
- CLARK, DORIS, 38, 116, 85—A Cappella Choir 58, 59, Section Leader 59; FHA 57, 58, 59, Miss Homemaker of Tomorrow 59.
- COOK, GRANT, 38, 93, 110, 123, 86, 118, 29—Football Trainer 58, Head Trainer 59; Track Trainer 58; Slide Rule Club 58; Photography Club 58, 59, Vice-President 59; Dramatics Club 59, Vice-President 59; Hi-Y 58, 59, President 59, Secretary of Senate in Youth and Government 59; Senior Class Favorite 59; FHA Beau 59; Senior Play 59.
- COOK, JAMES, 38—Student Council 59; Hi-Y 59, Treasurer 59; Dramatics Club 58.
- CRUSE, ALICE, 38—Booster Club 57; Future Teachers Club 58; Journalism Club 58.
- DAIL, JULIA, 30, 38, 143, 82, 97—Student Council 58, Alternate 59; GRA 59; Band 57, 58, 59, Twirler 59, Secretary-Treasurer 58, 59.
- DAVIS, BARBARA, 38—FHA 57.
- DAVIS, NORMAN, 39, 89—Dramatics Club 58, 59, Vice-President 58, President 59; Hi-Y 59; "Our Town" 58; Senior Play 59.
- DAVIS, RAY, 39, 122, 126, 130—Football 57, 58, 59, lettered 59; Track 58; Slide Rule Club 58; Perfect Attendance 57, 58.
- DAVIS, SANDRA LEE, 39, 87—Student Council 57, 58; Book-keeping Award 58; FHA 57, 58.
- DEANS, EDWARD, 39, 122, 124—Football 58, 59, lettered 59; Basketball 58.
- DOLLAR, BILL, 39, 30, 82—Band 57, 58, 59, Captain 58, 59, Drum Major 59, First Place at Ensemble Contest 58; Slide Rule Club 58; Annual Staff Sophomore Editor 59.
- DOMINGUE, LEDA, 39, 145, 113—Junior Achievement 58, Company Sweetheart 58; FHA 58, 59, Second Vice-President 59; Dramatics Club 59; Tri-Hi-Y 59.
- DOUGLASS, EDWARD, 39, 122, 127; 120—Football 57, 58, 59, Captain 59, lettered 59; Basketball 57; Track 58.
- DUDLEY, PEGGY, 39, 34, 87, 3—Student Council Alternate 59; Booster Club 57; FHA 57, 58; Junior Class Treasurer 58, Senior Class Treasurer 59; Trojan Scribes 58, Secretary 58; Tri-Hi-Y 59, Treasurer 59; *Trojan Torch* 59.
- DUNHAM, ERNESTINE, 39, 93, 109, 85—Student Council 57, 58, Treasurer 58; Junior Achievement 58, Treasurer 58; A Cappella Choir 58, 59, Second Vice-President 58, 59; Booster Club 57, 58, Junior President 58; FHA 57, 58, 59, Vice-President 59; Bowling League 59; Personality Plus 59.
- DUNN, THOMAS, 39, 122, 126, 108, 113—Football 57, 58, 59, lettered 59; Baseball 58, 59; Hi-Y Club 58, Secretary 58; Most Versatile 59.
- ECHOLS, EDWIN EARL, 39—Football 58.
- ELLIS, JAMES, 40, 82, 118, 109—Band 57, 58, 59, President 58, Student Conductor 59, Lt. Colonel 59, First Division for Brass Sextet 58; Slide Rule Club 59, Vice-President 59; Junior Rotarian 59; Debate 58, First in District 58; Most Studious 59; Senior Play 59.
- ELY, ALLEN, 40—Football 57; Track 58, 59; Baseball 58, 59, lettered 58.
- ESTES, LYNNE, 40, 87, 89—*Trojan Torch* 59; Student Council 59; GRA 57; FHA 58, First Vice-President 58; Dramatics Club 59, Reporter 59; Science Club 58; Tri-Hi-Y 59, Senator in Youth and Government 59; Senior Play 59.
- ESTLINBAUM, MAURICE, 40, 122, 126—Football 59, lettered 59; Hi-Y 58; Junior Achievement 57.
- EVERS, TIMOTHY, 40—Baseball 58.

SENIOR INDEX

FAY, ROBERT MICHEAL, 40, 19, 117, 109, 98, 29—MES Club 57; Trojan Mascot 59; Student Council 59; Photography Club 59, President 59; Senior Play 59; Most Ambitious 59.

FROLICK, JAMES, 40.

FUGMAN, JOAN, 40, 34, 24, 81, 88, 95, 22, 97—Student Council 58, 59, Chaplain 58; Junior Class Parliamentarian 58; Senior Class Secretary 59; Future Teachers 57, 59, President 59; Los Amigos 59, President 59; Science Club 59, Librarian 59; Booster Club 58; Annual Staff Features Editor 59.

GABBERT, JEFF, 40—Hi-Y 59; Bowling League 59.

GEISSEN, LLOYD, 40, 80, 81, 122, 127, 132, 19, 116, 118, 85, 3, 139, 137—Football 58, 59, lettered 59; Basketball 58, 59, lettered 58, 59; Track 58, 59, lettered 58, 59; A Cappella Choir 57, 58, 59, lettered 57, 58, 59, President 58, 59, Section Leader 59; Junior Class President 58, Student Council 58; Student Body President 59; Junior Rotarian 59; Good Sportsmanship League Representative 59; Student Council Confederation Representative 59; Senior Ring Committee 58; Senior Play 59.

GENTRY, DIANA, 40—FHA 58.

GEORGE, BETTY, 40, 30, 93, 105, 87, 27, 104—FHA 57, 58, 59, Vice-President 59; Junior Achievement 57, 58, 59, Vice-President 57, 58, 59, Sweetheart 58; Booster Club 57, 59, Team Captain 59; Junior Class Favorite 58, Teen Correspondent 58; *Trojan Torch* 59; Miss SHHS 59.

GHORMLEY, BARBARA, 41, 93, 143—FHA 57, 58, 59, Parliamentarian 58, President 59, Miss Homemaker 59; Junior Achievement 58; All-Star Basketball Team 58.

GRAY, JOYCE, 41, 96, 97, 98—GRA 59; Future Nurses Club 57, 58, 59, Chaplain 57, Parliamentarian 58, President 59; Science Club 58, 59; Spanish Club 59.

GREER, LONA, 41—Transferred from Borger, Texas, 58; Tri-Hi-Y 59.

GRIFFIN, CLAUDE, 41, 93, 132, 133, 118, 137—Basketball 58, 59, lettered 59, Tri-Captain 59; Track 59; Science Club 59; Hi-Y 59; FHA Beau 59; Transferred from Austin High 58; Senior Play 59.

GROCE, JOAN, 41—FHA 57, 58, 59; Library Club 59; Junior Achievement 59.

HALL, GWYNDA, 37, 41, 88, 87—A Cappella Choir 57, 58, 59, lettered 58; *Trojan Torch* 59; Correspondent for Newspaper 58; Library Club 59, Reporter 59.

HANNON, ROSE, 41, 87—*Trojan Torch* 59; Tri-Hi-Y 59; Booster Club 57.

HARTWELL, JOEL, 41—Graduated at Mid-Term 59.

HAWK, CAROL, 41, 110, 143, 97—GRA 57, 58, 59, Secretary 58; Tri-Hi-Y 59; FHA 58, 59; Senior Class Favorite 59.

HEFFNER, PAT, 41—Band 57, 58.

HEITMAN, MIKE, 41, 122—Football 58, 59, Captain 50, lettered 59.

HENDRIX, ROBERT HENRY, 41—Slide Rule Club 58, 59.

HERNANDEZ, ALBERT, 42.

HERROD, DAVID—FFA 57, 58, 59.

HILL, SAMUEL, 42—FFA 58, 59, Sentinel 59; Football 57.

HOLDSAMBECK, WANDA, 42—Student Council Alternate 59.

HOWARD, DAVID, 42—A Cappella Choir 57, 58, 59, lettered 57, 58, 59.

HOWARD, HENRY, 42—FFA 58, Secretary 58; Hi-Y 58.

HUETTE, BOBBY, 42—Transferred from Georgia 58.

HUDSON, SUE, 42, 93, 87—Student Council Alternate 57, 59; Booster Club 57; Tri-Hi-Y 59; FHA 57, 58, 59, Reporter 59; *Trojan Torch* 59.

HUMPHREY, MARY LEE, 42.

INGRIM, BILLY, 42, 122, 124, 124, 125—Football 59, lettered 59.

JACKSON, JERRY, 42, 122, 125, 28—Football 58, 59, lettered 59.

JACOBSEN, SANDY, 42—FHA 59.

JONES, JIMMY, 43—FFA 58, Sentinel 58.

KENDALL, RICHARD, 43, 95, 117, 118, 108—Highest Ranking Sophomore 57; Highest Ranking Junior 58; American Chemical Society Chemistry Award 58; WOW American History Award 58; Outstanding Science Student 58; Straight "A" Student 57, 58, 59; Perfect Attendance 58; Junior Achievement 58, 59, President 59, Vice-President 58; Science Club 59, President 59; Most Likely to Succeed 59.

KILPATRICK, JOYCE, 43—FHA 58; Booster Club 57.

KING, JIMMIE, 43.

KINSEY, DOLORES, 43—FHA 57, 58.

KITCHEN, MEL WAYNE, 43—Hi-Y 58, 59.

KIRKPATRICK, CAROL JEAN, 43—Transferred from Illinois 58.

KLARAS, BARBARA, 29—Student Council 57; A Cappella Choir 59; All-Star Volleyball Team 57; Transferred from Lufkin, Texas, 59.

KRAJCIK, ARNOLD, 43, 18—FFA 57, 58, 59.

LEE, JOE, 43—Football 58; Track 58.

LEFLETT, EMILY, 43, 93, 87, 97—A Cappella Choir 58, 59; GRA 57, 58, 59, Reporter 57, President 59; Booster Club 57; All-Star Volleyball 57; FHA 58, 59, Secretary 58, Parliamentarian 58; Junior Achievement 58, 59; *Trojan Torch* 59.

LINARES, OLIVIA—Transferred from Tucumcari, New Mexico, 59.

LINTHICUM, EDWARD, 43—FFA 58, 59; Hi-Y 59.

LLAMAS, RITA, 44, 97—FHA 57; GRA 58, 59; Spanish Club 58, 59, President 59.

LOCHERMAN, WAITUS—Transferred from Milby 59.

LONG, RICHARD, 91—"Our Town" 58; Transferred from Biloxi, Mississippi, 59.

MCCALL, JEFFREY LYNN, 44—FFA 59; Transferred from Mississippi 59.

MCCORMICK, PAT, 44—FHA 58, 59; Dramatics Club 59.

MCCOWAN, JANICE, 44, 143—FHA 57, 58, 59; Junior Achievement 59.

MCDOWELL, JAMES, 44.

MCGAUGHEY, RICHARD, 44, 122, 125, 127—FFA 57, 58, 59, Secretary 58, Reporter 58, State Contest Winner 57; Football 59, lettered 59.

MCGOWEN, KENNETH, 44, 80, 81, 106, 122, 127, 128, 132, 19, 133, 25, 116, 136, 118, 104, 85, 105—Football 59, lettered 59; Basketball 57, 58, 59, lettered 58, 59, lettered 58, 59, Co-Captain 58, Tri-Captain 59; Track 57, 58, lettered 58; A Cappella Choir 59, Section Leader 59; Vice-President of Student Body 59; Student Council 59; Junior Rotarian 59; Slide Rule Club 58; Science Club 59; Senior Play 59; Mr. SHHS 59.

McMULIN, BILLY, 44, 122, 128, 28—Football 58, 59, lettered 59; Band 57, 58, Tri-State Band 57; Hi-Y 59.

MACHOCKY, ROBERT, 44—Slide Rule Club 58; Hi-Y Club 59.

MADEKSHO, MAX, 44, 122, 108, 140—Football 59, lettered 59; Baseball 58, 59; Most Dependable 59.

MANGRUM, PEGGY, 44, 132, 97—GRA 58.

MARTINEZ, FELIX, 45, 89—Perfect Attendance 57; Mathematics Unlimited 58; Los Amigos 59; "Curtain Call" 59; Senior Play 59.

MATTHEWS, LESTER, 45, 127, 85—Football 57, 58, 59; Track 57, 58; A Cappella Choir 59.

MATUSIEWICZ, GWEN, 45—"Our Town" 58.

MAY, JANICE, 45—Transferred from San Antonio 59; FHA 59.

MAYES, NORMAN, 45, 80, 106, 131, 23, 116, 111, 113, 29—Student Council 59, Parliamentarian 59; Debate 58, First Place District 58; Junior Achievement 58; Science Fair Award 58; Boys' State 58; Cheerleader 59; Slide Rule Club 57, 58, Vice-President 58; Senior Play 59; Transferred from Sweetwater, Texas, 58; Personality Plus 59.

MAYO, M. L., 45, 132, 133, 18, 109, 136, 140—Basketball 58, 59, Captain 58, 59, Lettered 58, 59; Baseball 58, 59, Captain 58, 59, lettered 58, 59; A Cappella Choir 59; FFA 57, 58, 59, Vice-President 58, 59; Friendliest 59.

MEADOR, DON, 26, 45, 131, 134, 27, 116, 118, 85, 3—Cheerleader 57, 58, 59; A Cappella Choir Alternate 59; Student Council 57, 58, President of Student Body 58; Junior Rotarian 58; Good Sportsmanship League 58; Senior Ring Committee 58; Color and Mascot Committee 58; Annual Staff Sports Editor 59.

MELCHOR, DORA, 45—A Cappella Choir 58; Girls' Choir 57.

MILLIGAN, NORMAN, 45, 122, 126, 28—Football 58, 59, lettered 59.

MINTZ, PHILLIP, 45—Transferred from Jones 59.

MOORE, CAROL, 45, 18, 94, 85, 140, 25—Baseball 58; Basketball 58, lettered 58; FFA 57, 58, 59, District Vice-President 58,

SENIOR INDEX

Chapter President 58, 59, Champion Fat Steer 59; A Cappella Choir 58, 59, Section Leader 59; Winner of First Trophy at SHSHS 58.

MOORE, JIMMIE, 46—Football 57, 58.

MORENO, RICHARD, 46, 122, 126—FFA 57, 58, 59, Reporter 57, 58; Football 58, 59, lettered 59.

MURPHY, BENJIE, 46—Football 58; Basketball 58; Hi-Y 58, 59; Science Club 59; Bowling League 59, President 59.

MYERS, SANDRA, 46—Student Council Alternate 57; Dramatics Club 59; FHA 59; A Cappella 58.

NELSON, RAYLEEN, 46, 91—FHA 58, 59; Slide Rule Club 59, Corresponding Secretary 59.

NEUMANN, SHARON, 46, 143, 97—GRA 58; FHA 58.

NICHOLS, JOYCE, 46—FHA 58.

NOTHNAGEL, SAM ED, 46.

O'BRIEN, DENNIS, 46—Baseball 59.

OWERS, MELODY, 46, 85—A Cappella Choir 58, 59, Corresponding Secretary 59; Tri-Hi-Y 59, President 59.

PARKER, KENNETH LEE, 46.

PAUL, PHILLIP, 46, 82, 89—Band 58, 59, First Place Solo 58.

PAVY, JEANNE, 47, 143, 117, 97—Annual Staff 58; FHA 58; GRA 59.

PEREZ, TONY, 47, 122, 124—Football 57, 58, 59, lettered 59; Slide Rule Club 58.

PIPES, ORVAL, 47.

POWELL, DANNY, 47, 106, 118, 25—Slide Rule Club 58, President 58, Hi-Y 58, 59, Treasurer 59, Student Council 58; Hi-Y 58, 59, State Legislature 59; Junior Rotarian 59.

PREECE, GEORGE, 47, 122, 128—Football 59, lettered 59.

PRESSWOOD, LOIS, 34, 47, 106, 108, 113, 86, 25—Junior Class Historian 58; Student Council 58; Spardoneirs 59, President 59; Senior Class Secretary 59; Tri-Hi-Y 59; Most Dependable 59.

PRICE, LAURA JANE, 47, 88—FHA 57, 58; Library Club 58, 59.

QUIGLEY, JIM, 47—Dramatics Club 59; A Cappella Choir 58, 59; Transferred from Frankfurt, Germany.

RAGLEY, JOYCE, 47, 81, 88, 119—FHA 57, 58, 59; Library Club 58, 59, Secretary 58, Vice-President 59; A Cappella Choir 58; Student Council 59; Junior Achievement 59, Treasurer 59; Christmas Program Director 59.

RAZO, ROBERT, 47, 123—Football Manager 58, 59; Track Manager 58.

REDFEARN, JANE, 47, 88—Library Club 59; Future Nurses Club 59; Slide Rule Club 59; FHA 58, 59.

REECE, BOBBY, 29.

RICHARDSON, SANDRA JO, 47, 85—FHA 57, 58, Song Leader 58; Student Council Alternate 57, Student Council 58; A Cappella Choir 58, 59, Section Leader 59.

RIPLEY, BILLY, 48, 122, 124, 126, 132, 144, 27, 137, 140—FFA 57, 58, 59, Secretary 59; Football 57, 58, 59, Captain 59; Basketball 58, 59, lettered 58, 59; Baseball 58, 59; Hi-Y 58, 59, President 58, Vice-President 59; Junior Class Favorite 58.

RITCHIE, MICKI, 48, 143—Future Nurses Club 59; Science Club 59; Choir 58; FHA 58, 59.

ROSS, CONNIE—Transferred from Jesse Jones High 59; FHA 59.

ROWLAND, ROBERT, 48.

RYAN, CHARLOTTE, 48—Student Council 57, 58; FHA 57, 58, Treasurer 58; Senior Class Secretary 58.

RYAN, WAYNE ALLEN, 48.

SAGER, ROY, 48—Slide Rule Club 58.

SANCHEZ, GLORIA, 48, 29.

SINGLETON, BILLY, 48, 82—Football Manager 58; Track Manager 58; Band 58, 59, 1st Lieutenant 59.

SMITH, ELINDA LOU, 30, 48, 80, 19, 117, 3—Student Council 57, 58, 59, Secretary 59, Vice-President of the Student Body 58; FHA 57, 58, 59; Booster Club 57; Annual Staff Sophomore Editor 58; Annual Staff Editor 59; Good Sportsmanship League Delegate 58; Color and Mascot Committee 58; Delegate to Gulf Coast Association of Student Councils 59.

SMITH, PAULA, 48.

SOLLOCK, CAROLYN, 49, 88, 108—FHA 57, 58, 59, President 58, Secretary 57; Library Club 58, 59, President 58, Secretary 59; Most Likely to Succeed 59.

SOTO, GUADALUPE, 49—Orchestra 57, 58.

SPANN, FRANK—FFA 58, 59.

SPARKS, BARBARA ANN, 49, 143, 97—Band 57, 58, 59, Tri-State Band 57; Student Council 57, Alternate 59; GRA 58, 59.

SPOUSE, MARY, 49, 143—Student Council Alternate 57; Booster Club 57; FHA 58, 59, Secretary 59.

STORY, SUE, 49, 143, 97—FHA 57, 58; GRA 57, 58, 59, Treasurer 58, Vice-President 59; All-Star Volleyball Team 58.

STRATOS, NICK, 49—Football Manager 58; Baseball 58.

SWEENEY, JAN, 34, 49, 85—A Cappella Choir 58, 59, Treasurer 59, Section Leader 58; Senior Class Historian 59; Student Council 59; "Our Town" 58.

TAYLOR, HOWARD, 49, 106, 122—Football 58, 59; Baseball 58; Hi-Y 58.

THOMAS, GLEN, 49, 145—Hi-Y 58; FFA 59, Conducting Team 59.

TRAXLER, SONDRRA, 49—Girls' Choir 57, 58; Contest Play 58.

UNDERWOOD, TONY, 50—Transferred from Austin High 58; Dramatics Club 58; Science Club 59; Library Club 57.

VANECEK, MICHAEL, 50, 98, 29—Junior Achievement 57, 58, 59; Science Club 59; Lens Lancers 59, Treasurer 59; Student Council Alternate 59; Number Sense Club 57; Senior Play 59.

VARGAS, JUAN, 50—Transferred from Los Fresnos, Texas, 58.

WAGNER, WILLIAM, 50, 132—Basketball 58, 59, lettered 58, 59; Baseball 58.

WARD, JUDY, 34, 49, 50, 82, 89—Band 58, 59, Officer 59, First Place Solo 58; Senior Class Parliamentarian 59; Tri-Hi-Y 59; Annual Staff Senior Editor 59; FHA 59; Trojan Scribes 59; Transferred from Liberal, Kansas, 58.

WEEDE, GENE, 50—FHA 58, 59, Treasurer 58.

WEYMOUTH, HENRY, 50—Junior Achievement 58, 59, Vice-President 58, Best Salesman Contest Second Place 59, Delegate to Achiever's Association 58, Delegate to Southern Management Conference (Georgia) 59, President 59; Talent Show 59; Senior Play 59.

WHATLEY, JACK, 50.

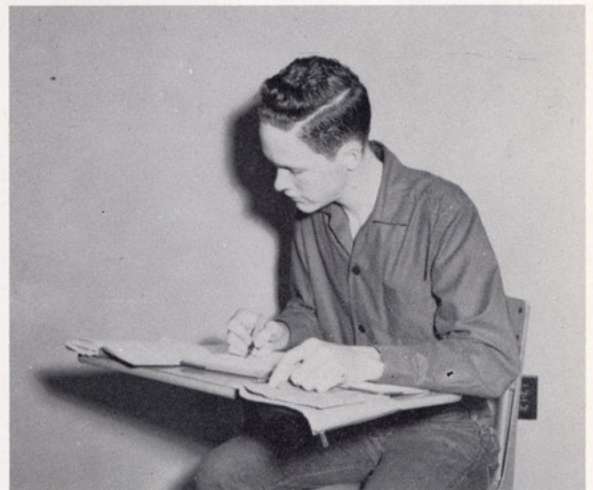
WILLIAMS, BOBBY, 26, 50, 29—A Cappella Choir 58, 59; Senior Play 59.

WILLIAMSON, BILLY, 50—FHA 58, 59.

WOLF, SUE, 50, 114, 156, 27, 113—Choir 57, 59; FHA 59; Most Beautiful 59.

WOTTRING, CHARLES, 50.

ZARNOW, SHIRLEY, 50, 91—FHA 57, 59; Mathematics Unlimited Club 59; Booster Club 57.



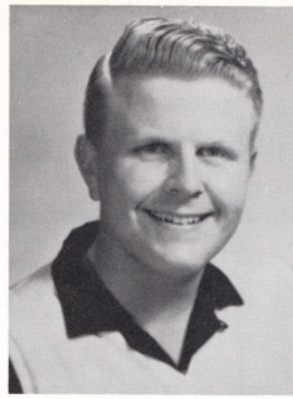
Our thanks to Larry Green, who has been our bookkeeper!



JACKIE ASHLEY
Business Assistant



BESS ANN BOYER
Art Editor



BILL DOLLAR
Sophomore Editor



JOAN FUGMAN
Feature Editor

PALLADIUM STAFF 1959



SANDRA GILLEAN
Junior Editor



Staff members select photos to be used in the annual.



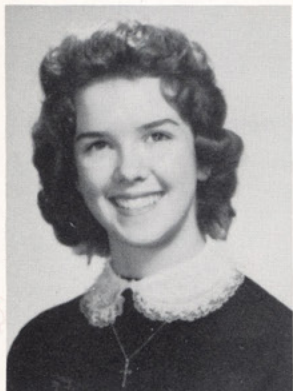
ELINDA SMITH
Editor



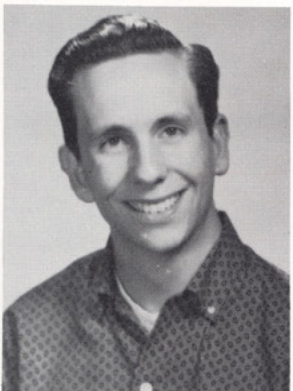
HERBERT HANUS
Business Manager



MRS. FRANCES PARKER
Sponsor



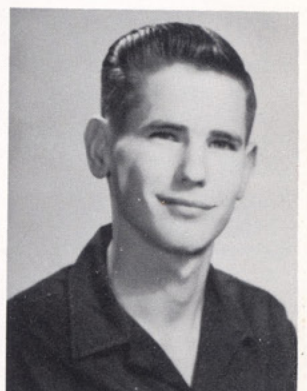
PAT HUTCHISON
Club Editor



DON MEADOR
Sports Editor



JUDY WARD
Senior Editor



TOMMY YOUNG
Photographer

SOUTH HOUSTON HIGH SCHOOL